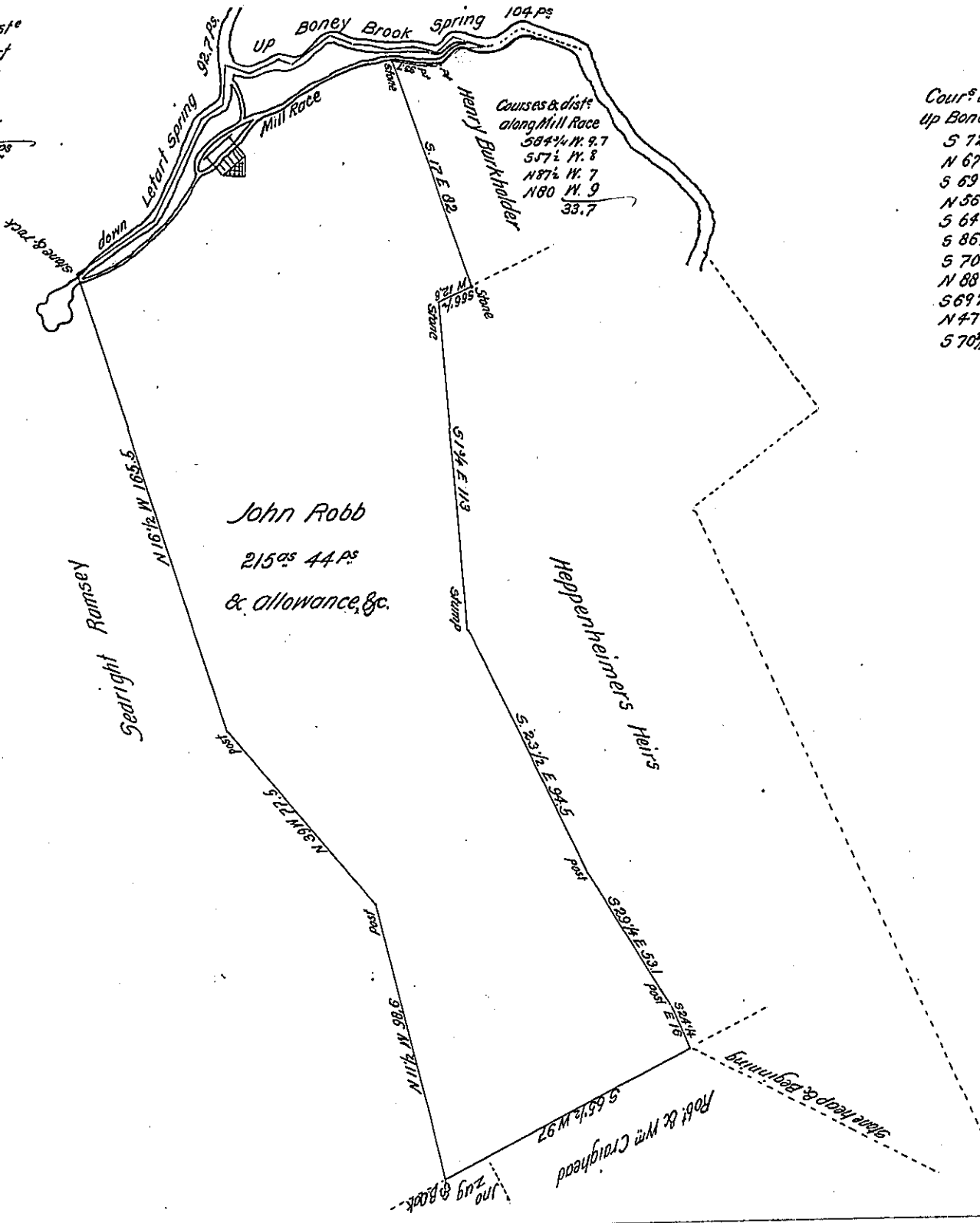


Courses & dist^o
 down Letart
 N 59° E 31.7
 N 29° E 39
 N 60 1/2° E 9
 N 5 1/2° E 13
 92.7 P^s

Courses & dist^o
 along Mill Race
 S 84 1/4° N 9.7
 S 7 1/2° N 8
 N 87 1/2° N 7
 N 80° N 9
 33.7

Courses and distance
 up Boney Brook Spring
 S 72 1/2° E 9
 N 67 1/4° E 15
 S 69° E 5
 N 56 1/2° E 17
 S 64 1/4° E 8
 S 85 1/2° E 6
 S 70 1/4° E 6
 N 88° E 10
 S 69 1/4° E 8
 N 47° E 8
 S 70 1/2° E 12
 104 P^s



Draught of 215 acres & 44 perches & allowance of six p^{cs} & c for roads situate in South Heddleton Township Cumberland County, It being part of 549 1/2 ac and the usual allowance for roads &c. which being surveyed & divided in pursuance of a Warrant granted to John Robb dated the 22nd of March A.D. 1788 surveyed & divided October 25 Anno Domini 1821

So Samuel Cochran Esquire
 Surveyor General

Daniel Rowby D.S.

IN TESTIMONY that the above is a copy of the original remaining on file in the Department of Internal Affairs of Pennsylvania, made conformably to an Act of Assembly approved the 16th day of February, 1833, I have hereunto set my Hand and caused the Seal of said Department to be affixed at Harrisburg, this
 Seventeenth day of January 1907

W. A. C. Brown
 Secretary of Internal Affairs